

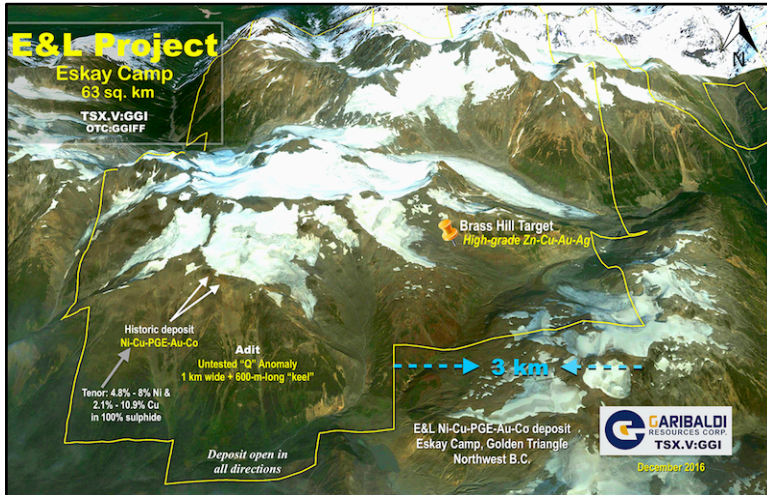
## GGI's E&L deposit...

*The first  
magmatic nickel-  
copper-rich  
massive sulphide  
system in prolific  
Eskay Camp*

April 24, 2017

*Nickel-copper-rich  
E&L Intrusion extends  
4 km long, 1.5 km wide*

*E&L deposit, Eskay Camp  
NW B.C.'s Golden Triangle*



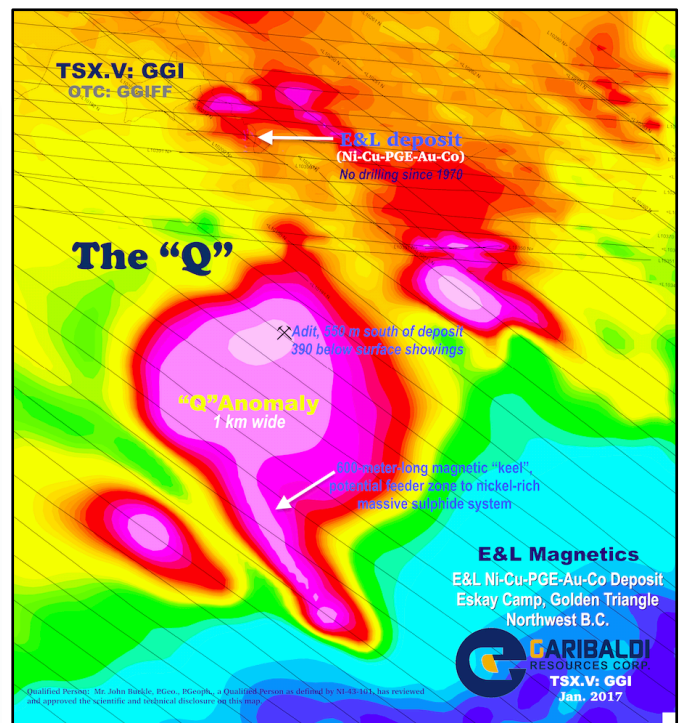
- ✓ Near-surface deposit and high-impact exploration play
- ✓ High nickel tenor
- ✓ Area claims consolidated - E&L Project expanded to 63 sq. km



### Final Week of April:

*VTEM Survey to be  
carried out at E&L  
to identify potential  
massive nickel  
sulphides to a depth  
of 300 meters*

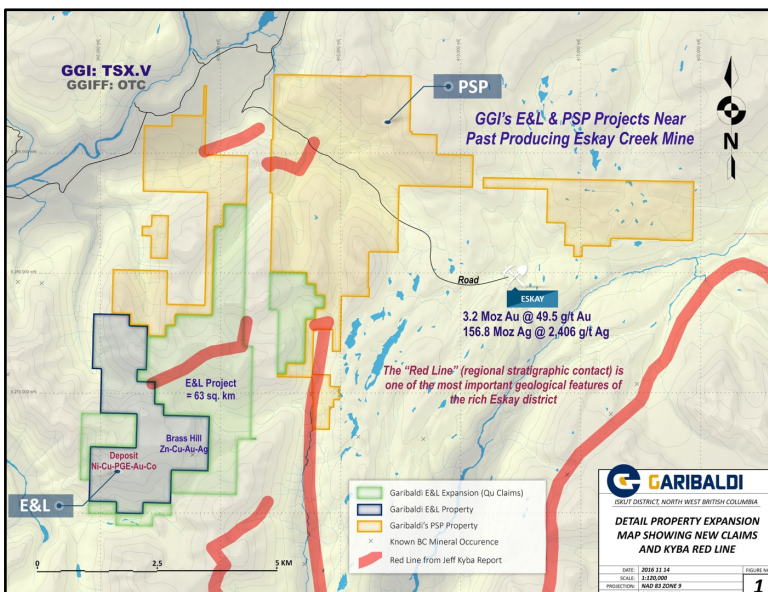
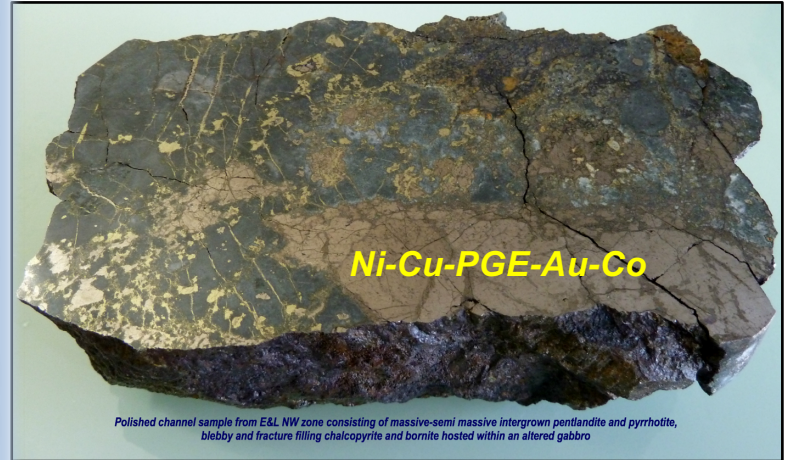
**Major 2017 summer  
drill program**



# E&L on the Fast Track

- ✓ 11 miles southwest of Eskay Creek, 20 miles west of Brucejack
- ✓ Massive district infrastructure improvements
- ✓ Exponential growth in knowledge of how major deposits have formed in district
- ✓ No drill holes completed at E&L since the early 1970's
- ✓ System has much greater scale and grade potential than originally understood

*E&L Project is being fast tracked by a highly experienced team of geologists and geophysicists including nickel sulphide experts Everett Makela, Dr. Raymond Goldie, Dr. Peter Lightfoot and Alan King.*



- ✓ GGI channel sampling returned 12 m @ 1.6% Ni, 1.6% Cu + Pt-Pd-Au-Co values
- ✓ Pyrrhotite-pentlandite-chalcopyrite mineral assemblage
- ✓ High tenor in 100% sulphide (4.8% to 8% Ni and 2.1% to 10.9% Cu)
- ✓ Major untested exploration potential to the south with "Q" magnetic anomaly
- ✓ Broad "Q" anomaly features 600-meter-long conduit-shaped "keel"

## Qualified Person

Mr. Everett Makela, P.Geo., Garibaldi director & VP Exploration Canada, is a Qualified Person as defined by NI-43-101 and has reviewed and approved the scientific and technical disclosure in this document.